

Developer

Shree Shyam Developers

Web : www.citycenterahmedabad.com

● SHOPS ● SHOWROOMS ● OFFICES

**CITY
CENTER**  @ SCIENCE CITY ROAD

Architect

9th Street Architects

Ar. Sourabh Verma

Structure Engineer

Umang Patel

Mo : 98253 12540

Site

City Center

Opp. Shukan Mall, Science City Road,
Off. S.G. Highway, Sola, Ahmedabad.

● SHOPS ● SHOWROOMS ● OFFICES

**CITY
CENTER**  @ SCIENCE CITY ROAD

Features

- | Aesthetically designed atrium
- | Optimization of sunlight & ventilation
- | Branded automatic lift
- | Ample basement parking
- | Surrounded by leading banks, schools,
temple, shopping mall & hotels

CITY
CENTER 

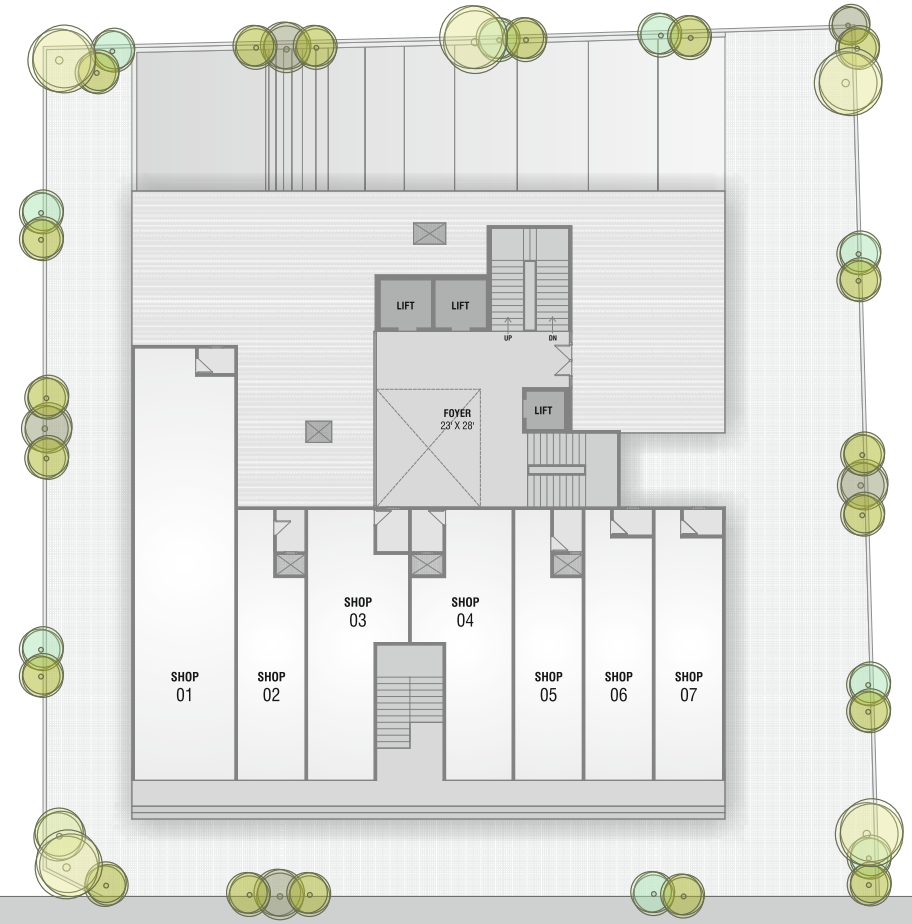






GROUND FLOOR PLAN

SHOP - 1	1637 sq.ft.	SHOP - 3	847 sq.ft.	SHOP - 5	653 sq.ft.	SHOP - 7	687 sq.ft.
SHOP - 2	654 sq.ft.	SHOP - 4	822 sq.ft.	SHOP - 6	676 sq.ft.		



7.50 M. T. SERVICE ROAD



FIRST FLOOR PLAN

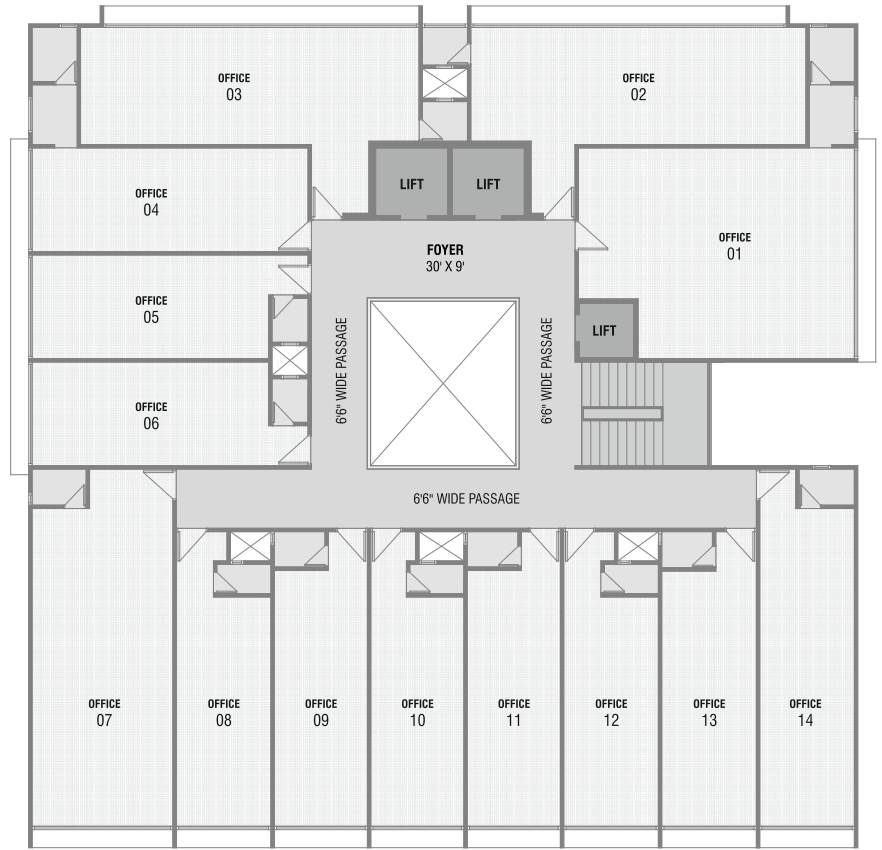
SHOP - 101	5480 sq.ft.	SHOP - 103	590 sq.ft.	SHOP - 105	720 sq.ft.	OFFICE - 101	1295 sq.ft.
SHOP - 102	768 sq.ft.	SHOP - 104	615 sq.ft.			OFFICE - 102	957 sq.ft.





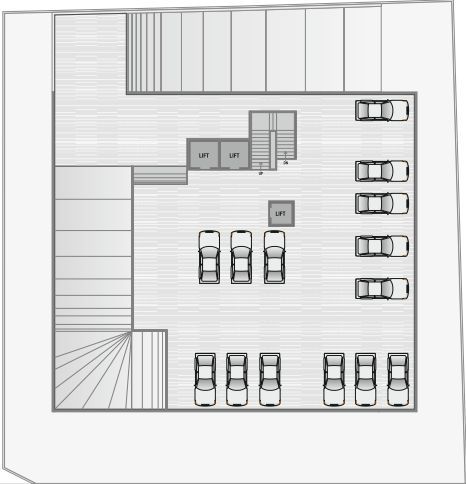
2ND TO 7TH FLOOR PLAN

OFFICE - 1	1295 sq.ft.	OFFICE - 5	610 sq.ft.	OFFICE - 9	610 sq.ft.	OFFICE - 13	607 sq.ft.
OFFICE - 2	957 sq.ft.	OFFICE - 6	610 sq.ft.	OFFICE - 10	566 sq.ft.	OFFICE - 14	747 sq.ft.
OFFICE - 3	986 sq.ft.	OFFICE - 7	1087 sq.ft.	OFFICE - 11	610 sq.ft.		
OFFICE - 4	745 sq.ft.	OFFICE - 8	578 sq.ft.	OFFICE - 12	578 sq.ft.		



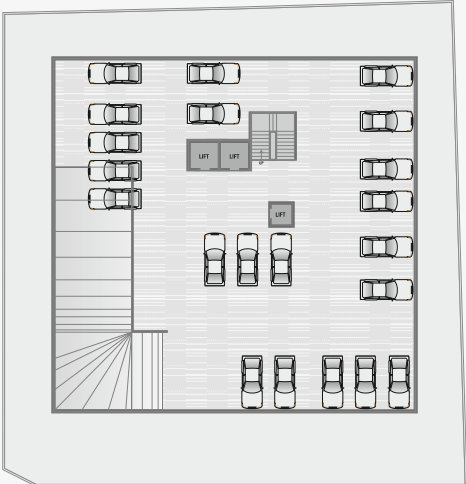


1ST BASEMENT PLAN

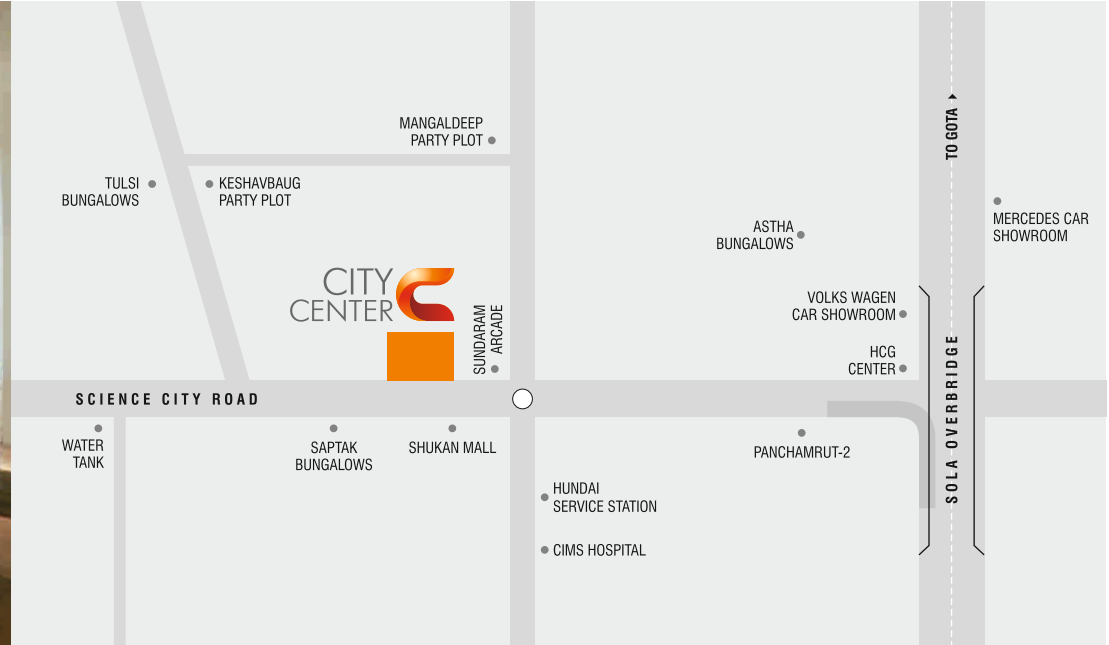


7.50 M.T. SERVICE ROAD

2ND BASEMENT PLAN



7.50 M.T. SERVICE ROAD



Specifications

- Structure**
Earthquake resistance R.C.C. structure & brick wall.
- Wall finish**
Internal smooth plaster & External sand face with plastic paint.
- Shops**
Good quality Rolling shutter with oil paint.

- Flooring**
Good quality Vitrified tile flooring in entire unit.
- Electrification**
Concealed copper wiring & good quality accessories with sufficient electric points
- Parking**
Sufficient Parking on ground floor & basement.

- ### Notes
- Developers reserves all rights for alteration & shall be binding to all the members. ■ All dimension / area are approximate & subject to variations
 - A.M.C., A.E.C., Legal Expense, Service tax & other Govt. charges, Stamp duty & Registration charges, maintenance charges, shall be borne by the members. ■ This brochure is not be treated as a part of the legal document it is for the easy display of the project.